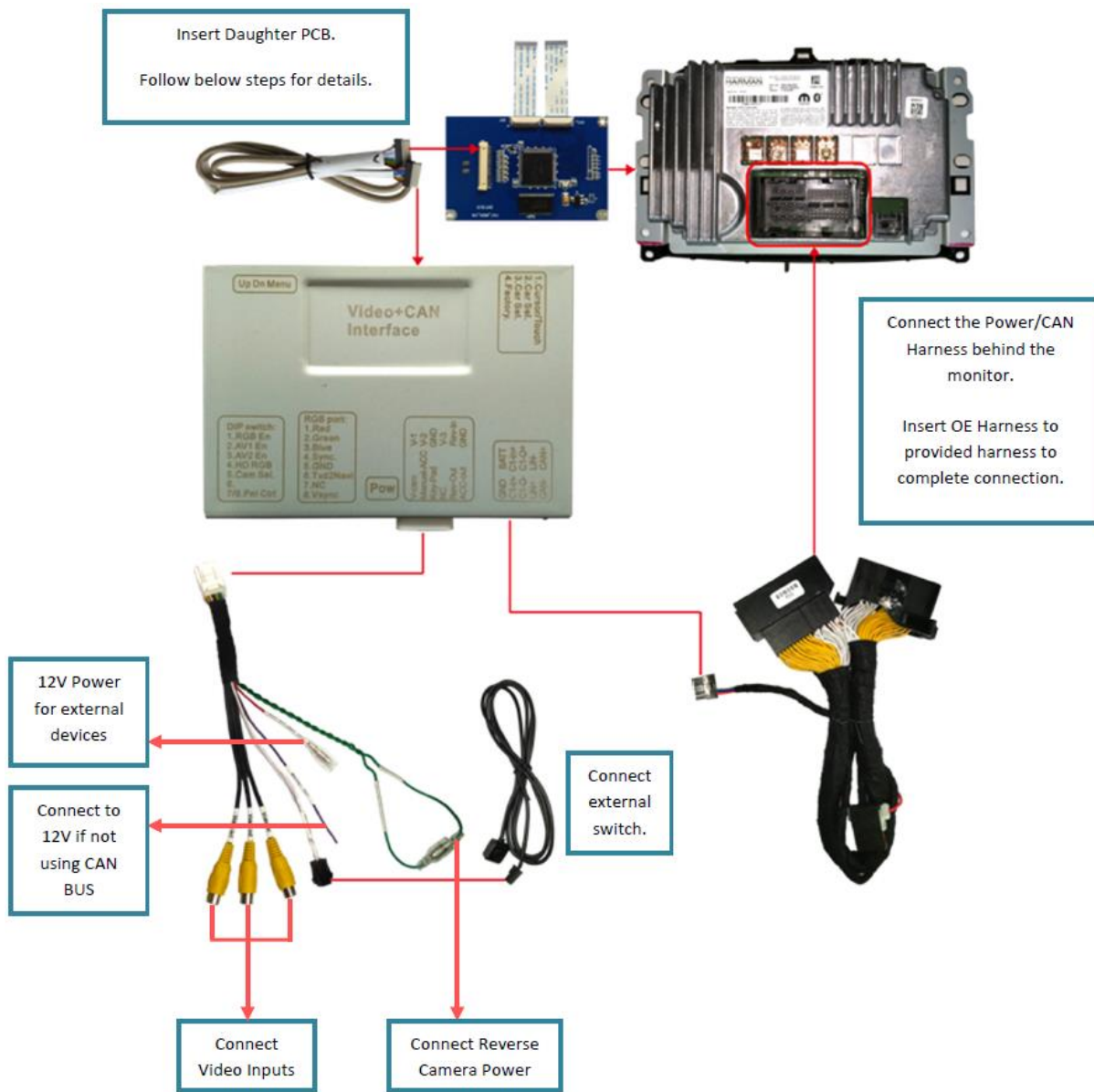
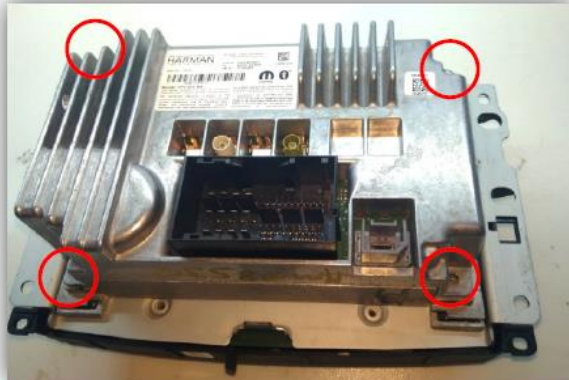


Uconnect 6,5 pouces





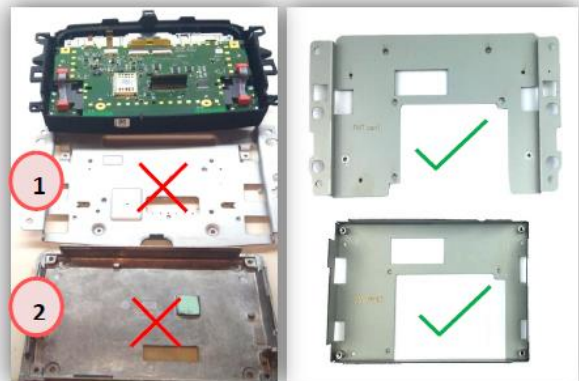
Step1: Remove the 4 screws. To Remove top cover.
(Will be replaced with provided screws when putting back together)



Step2: Carefully remove the back from the screen.
(Take special care of antenna wire)



Step3: Carefully remove the PCB board as shown.



Step4: Remove the original metal piece "1" and original metal piece "2". They will be replaced with "FIAT Part1" and "FIAT Part2" respectively.



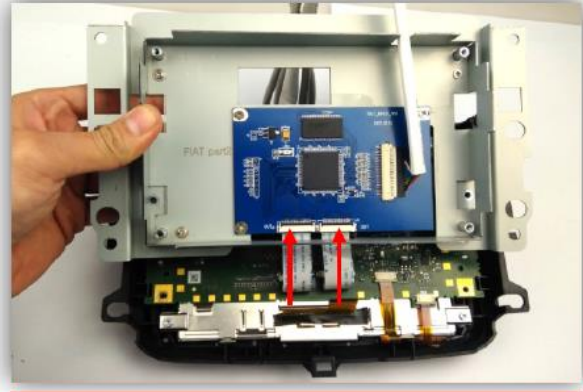
Step5: Disconnect the 2 LCD ribbon cables from main board carefully.



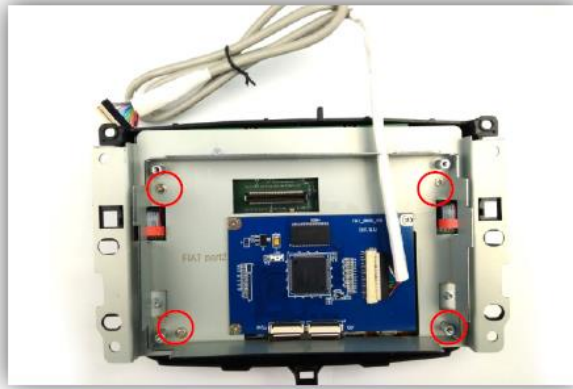
Step6: Affix provided Daughter PCB to "FIAT Part2" using provided screws. Place "FIAT Part2" on top of "FIAT Part1" and using OE screws to affix to main LCD.



Step7: Connect the Daughter PCB Board white ribbon cables to the main board.



Step8: Connect OE Golden Ribbon cables back to Daughter PCB Board to complete the connection.



Step9: Use the OE screws to fix the "FIAT Part2" to the main screen.



Step10: Carefully put back the OE board over it. Make sure the connectors connect properly.



Step11: Use the provided 4 screws to close the screen back. Connect the cables.