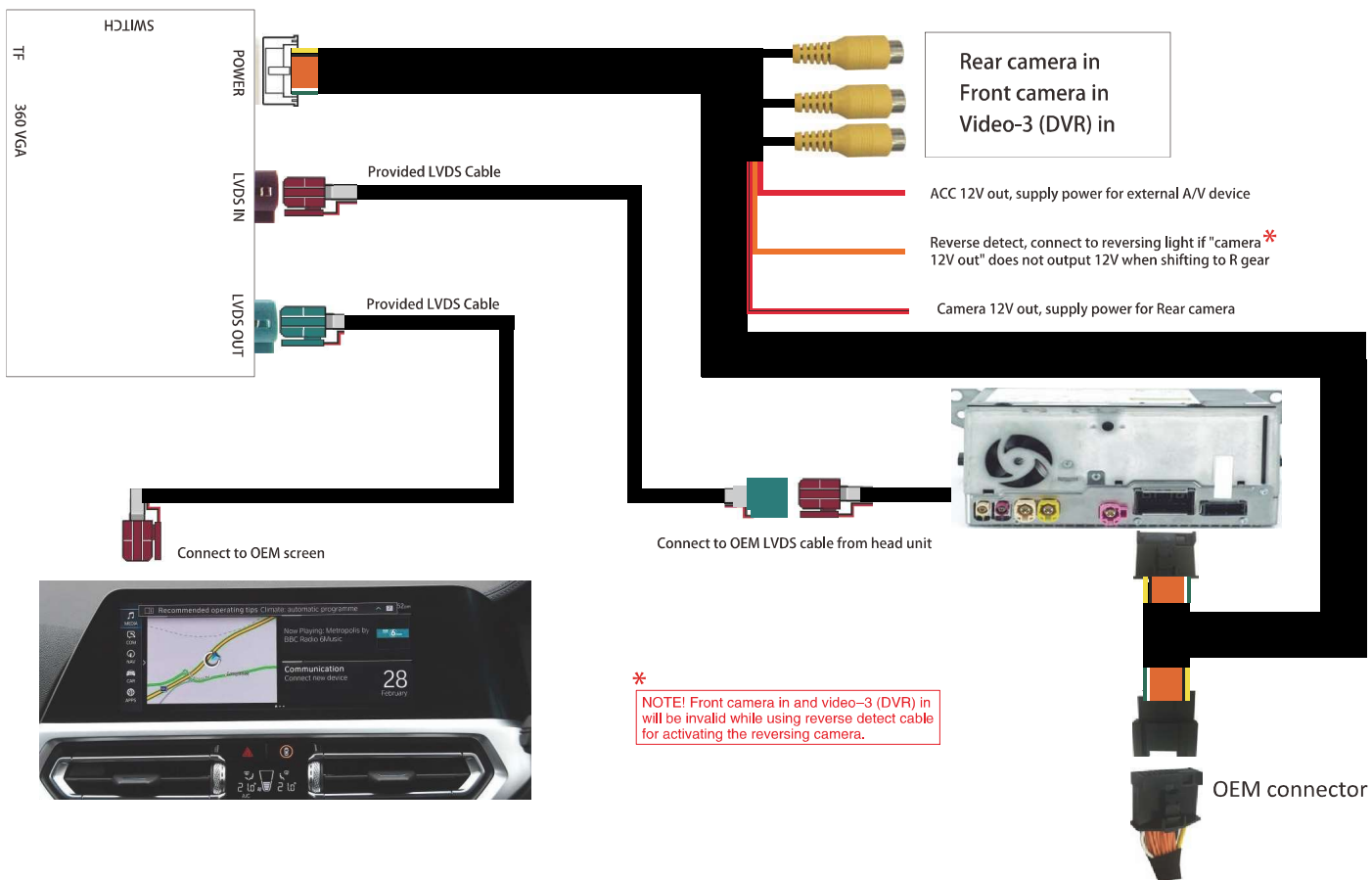


CONNECTION DIAGRAM

Camera interface for BMW MGU head unit

Art. 300 574



DIP switch settings

DIP	ON ▽	OFF ▲
1	Selection of car model & screen size	
2		
3		
4	Disable PDC (parking distance control)	Enable PDC
5	Disable active parking guideline	Enable active parking guideline
6		
7	Display front camera for 10S automatically after shifted from "R" gear	Disable front camera
8		

	DIP		
Car models	1	2	3
MGU head unit (ID7)	ON	OFF	ON

Some common DIP shortcuts

Function	DIP				
	4	5	6	7	8
Aftermarket rear camera (CAN bus control)	ON / OFF	ON / OFF	ON / OFF	ON / OFF	OFF ▲
Aftermarket rear camera (reversing lights control)	OFF ▲	OFF ▲	OFF ▲	OFF ▲	ON ▽
Factory rear camera	ON / OFF	ON ▽	ON / OFF	ON / OFF	ON ▽

NOTE! Please disconnect & reconnect interface's power after changing any DIP setting.

How to display video-3

Press and hold "HOME" button on iDrive joystick for 3S to display external video.

