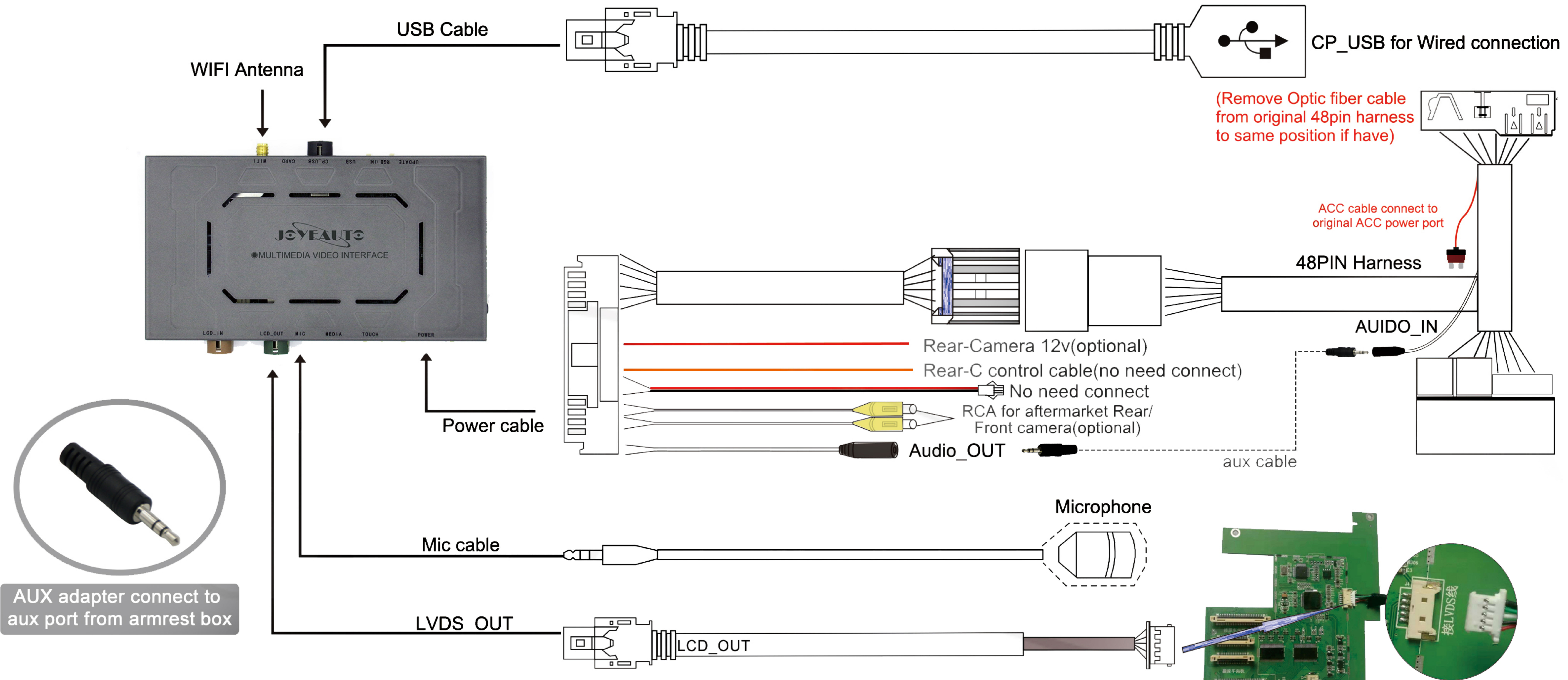


Porsche PCM3.0 Wireless CarPlay Installation Diagram

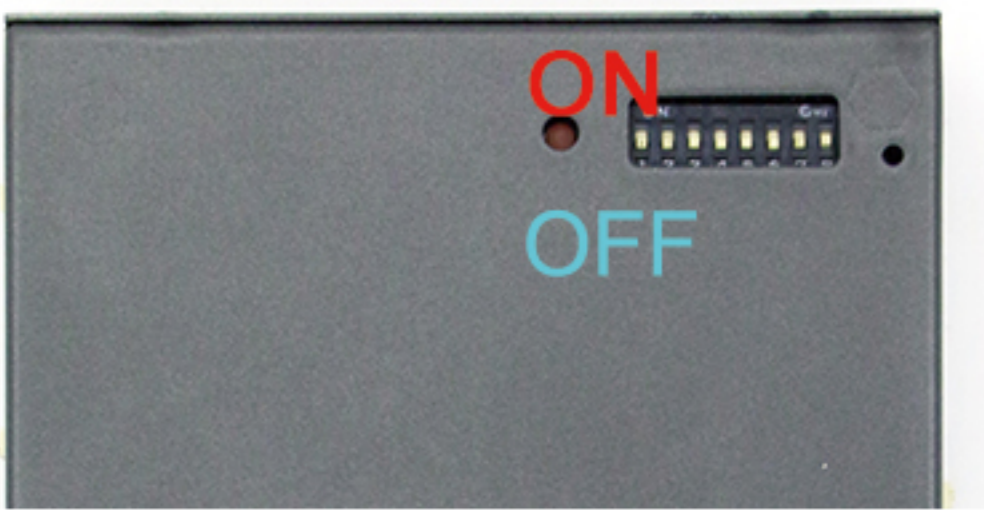
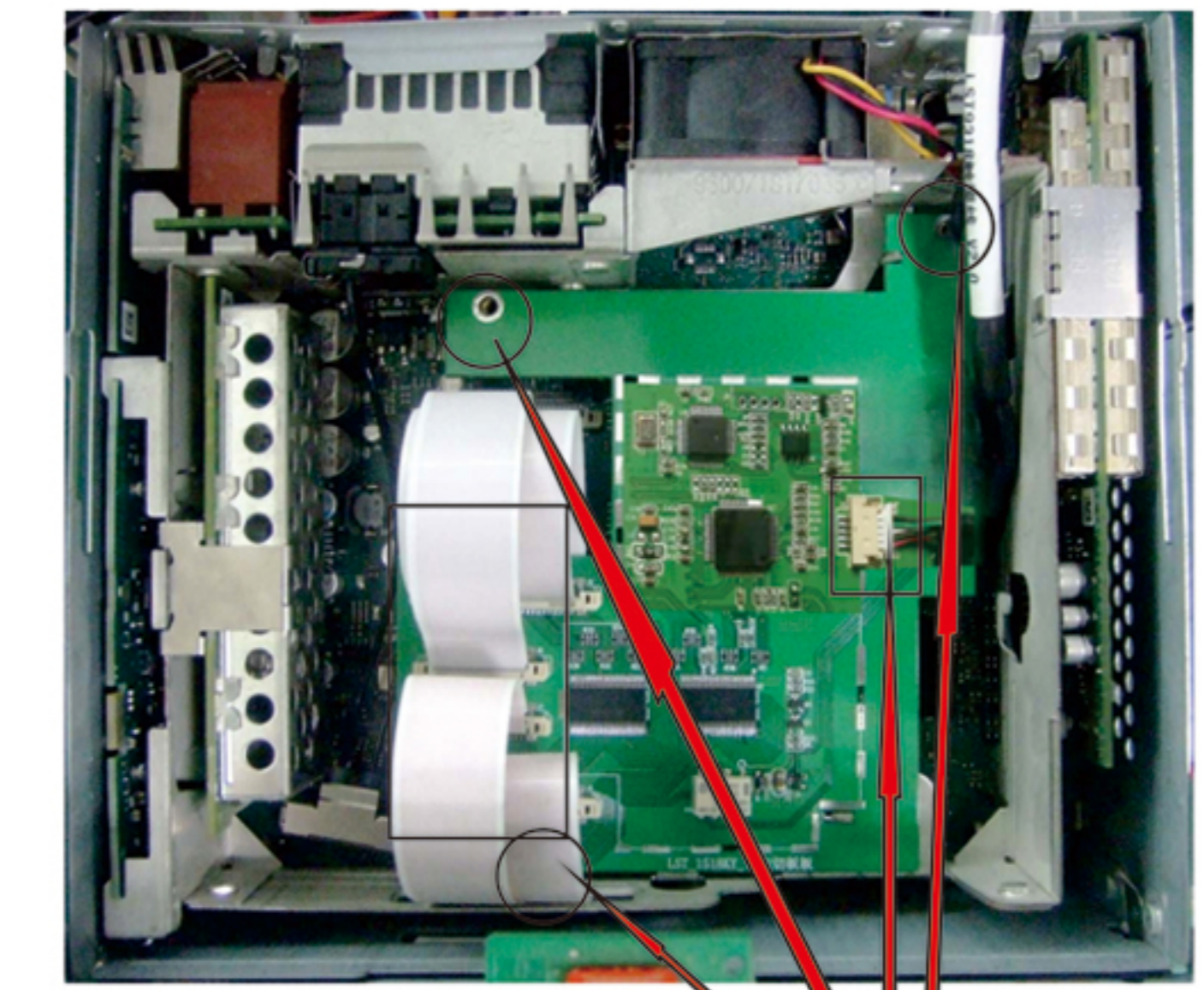


AUX adapter connect to aux port from armrest box

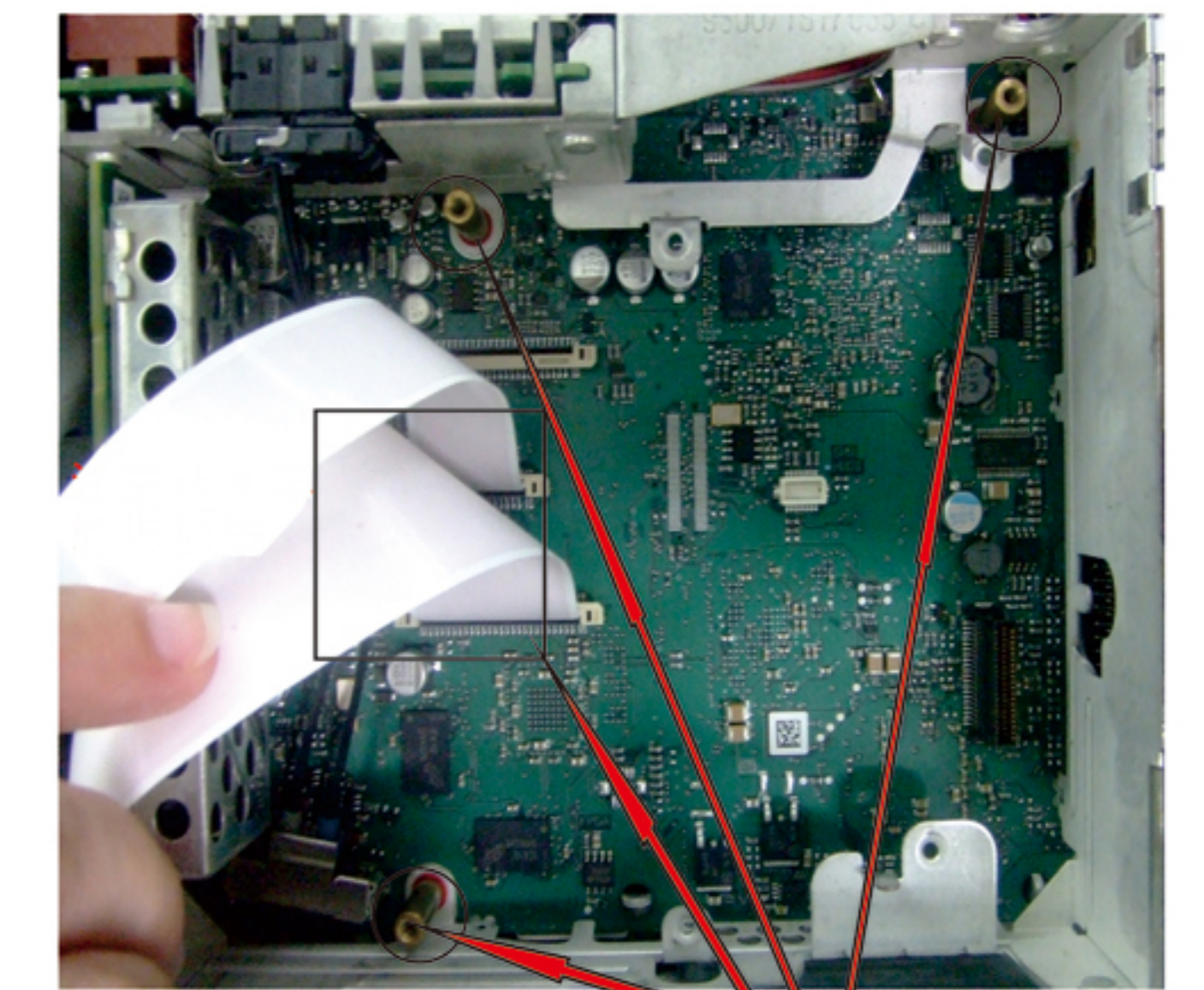
Note: Don't connect reverse

Dip Switch	Status	Description
2	ON	Touch correction
	OFF	OFF after correction
3	ON	For PCM3.0
	OFF	No function
4	ON	Reverse guideline OFF
	OFF	Reverse guideline ON
8	ON	Original Rear Camera
	OFF	Aftermarket Rear Camera

1, 5, 6, 7 all set OFF.

2, sub-board installation. connect well with 2PCS FPC and LVDS cable.



3, unscrew these three screws, and install three copper post. and then connect well with 2 FPC cable(30P/50P).