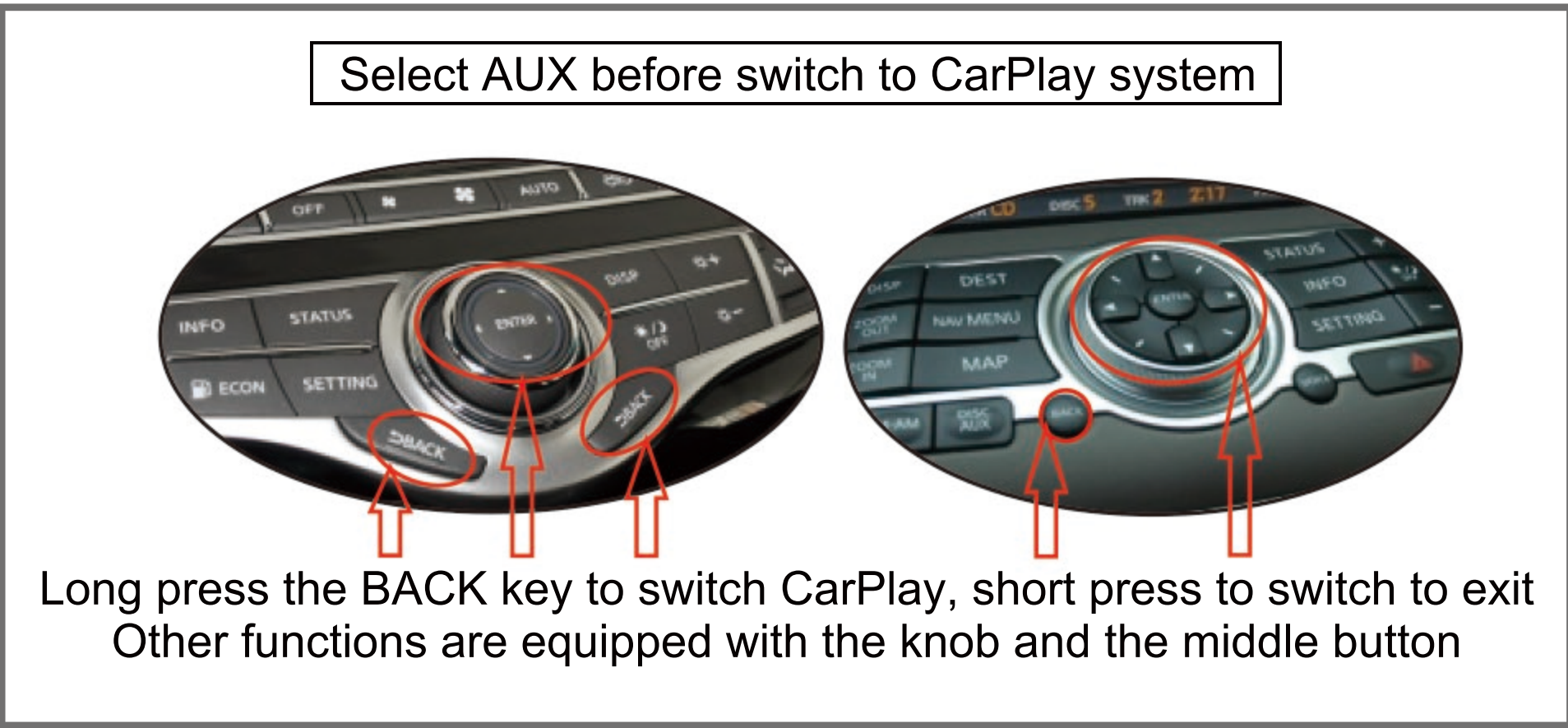
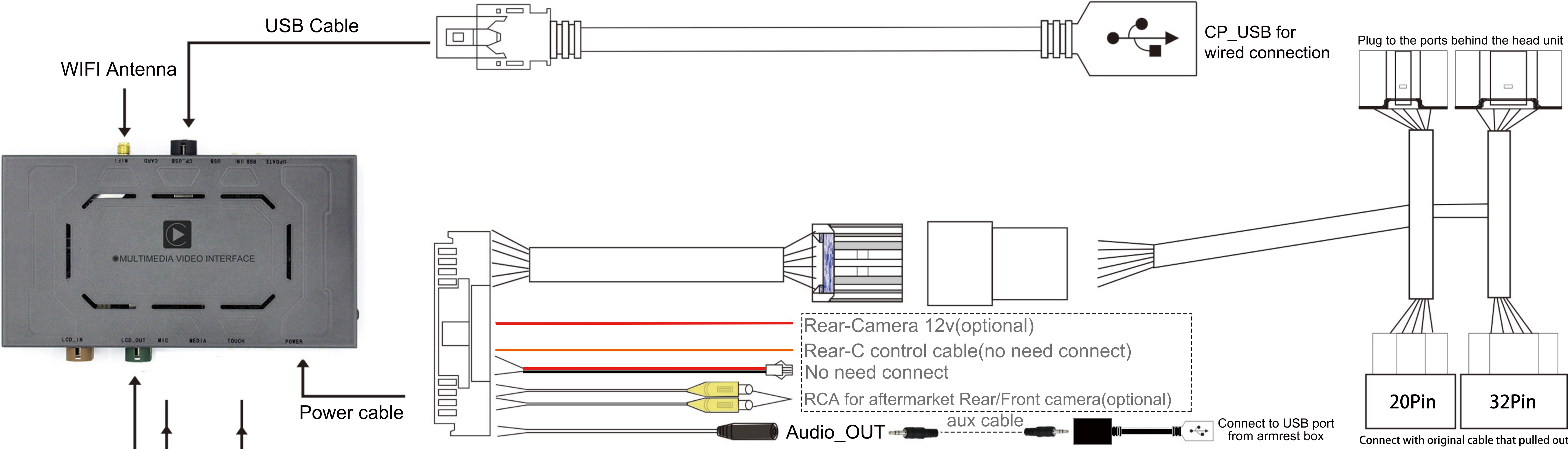


# Infiniti G35/FX35/EX35 Wireless CarPlay Installation Diagram

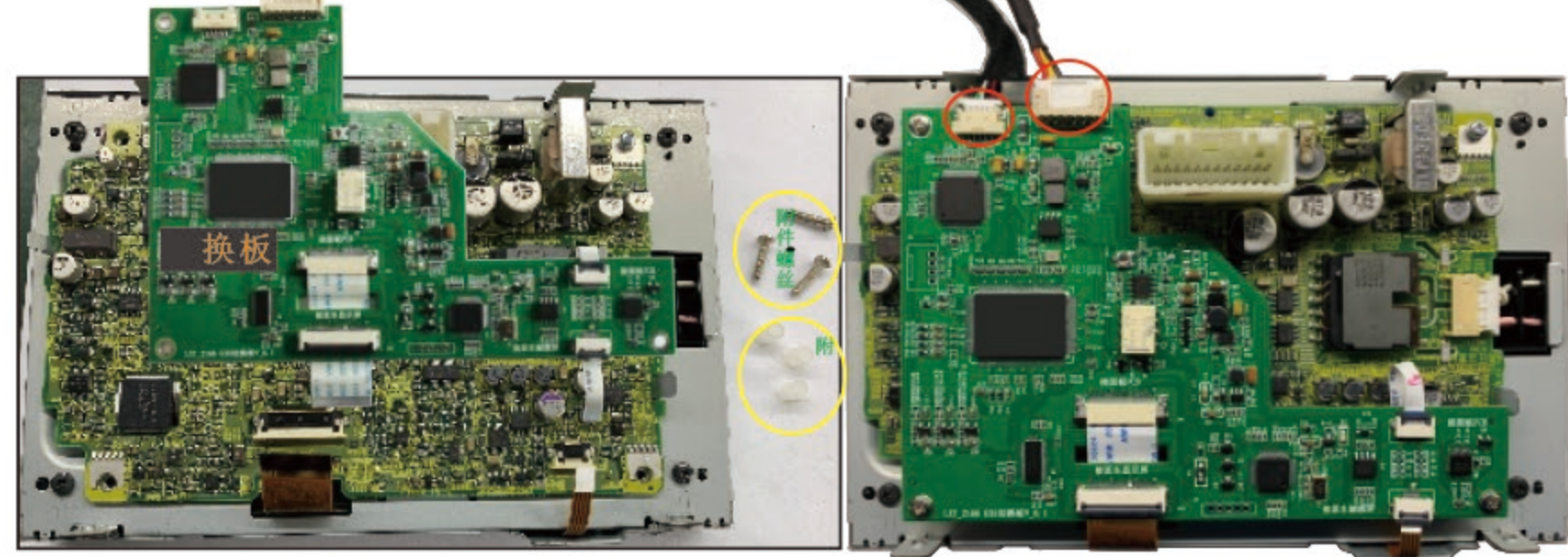


Dip Switch	Status	Description
3	ON	For G35/Q70
	OFF	no function
4	ON	Reverse guideline OFF
	OFF	Reverse guideline ON
8	ON	Original Rear Camera
	OFF	Aftermarket Rear Camera

1,2, 5,6, 7 all set OFF.



1, Unscrew 4pcs screws to open the back cover



2, Unscrew 3pcs PCB screws, Unplug the display and touch screen ribbon cable.

3, Connect the external kit PCB board (with 30PIN and 8PIN ribbon cable), then fix it by three glue column and screws. (Confirm the ribbon cable connect correct and well enough)

4, Connect the control cable and LVDS-OUT with the PCB board (be aware of the LVDS cable two bumps facing up)



5, Finally assemble back the back cover, be aware of the VLDS and control cable outlet location

# How to Connect Wireless Apple CarPlay

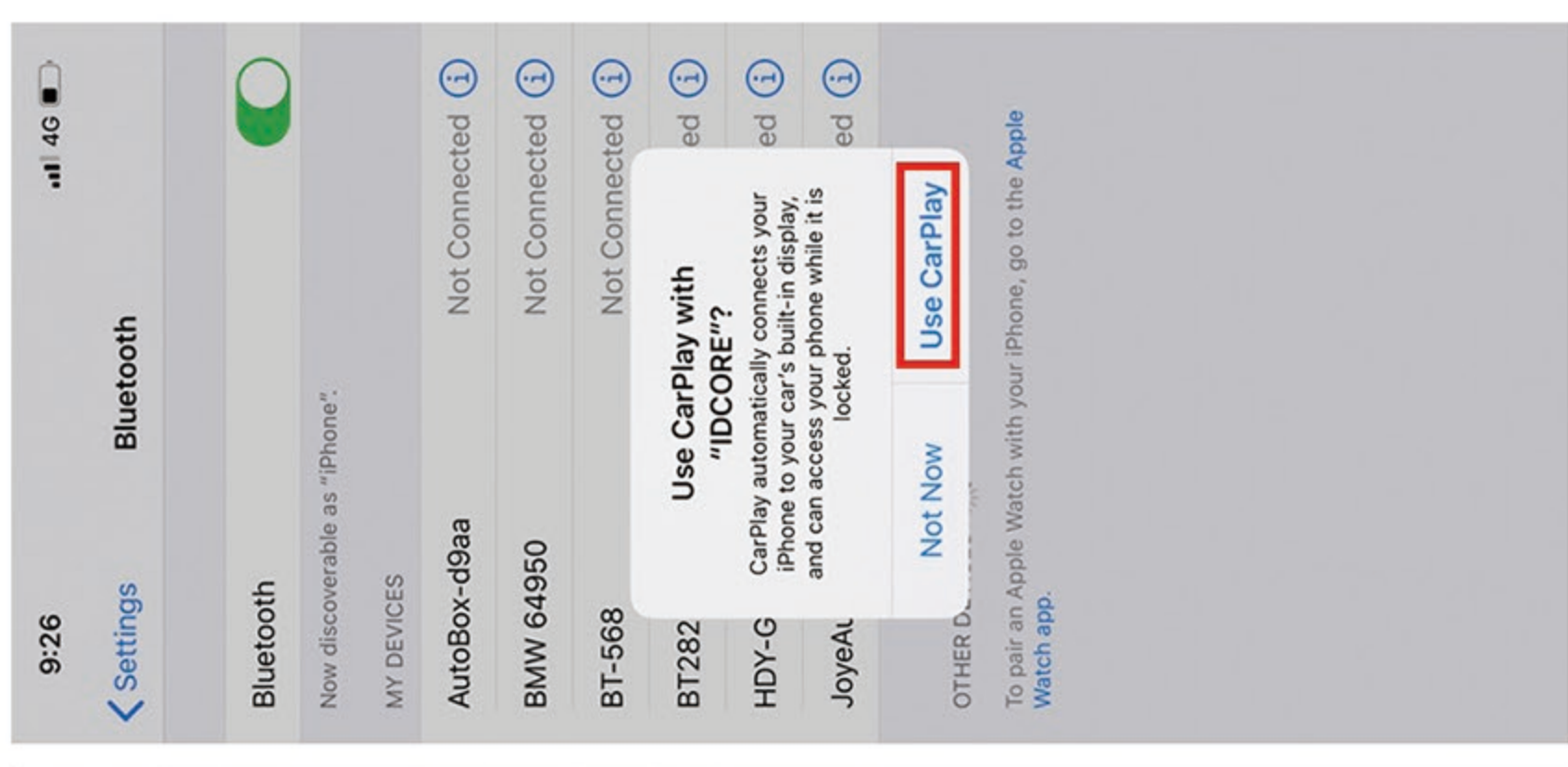
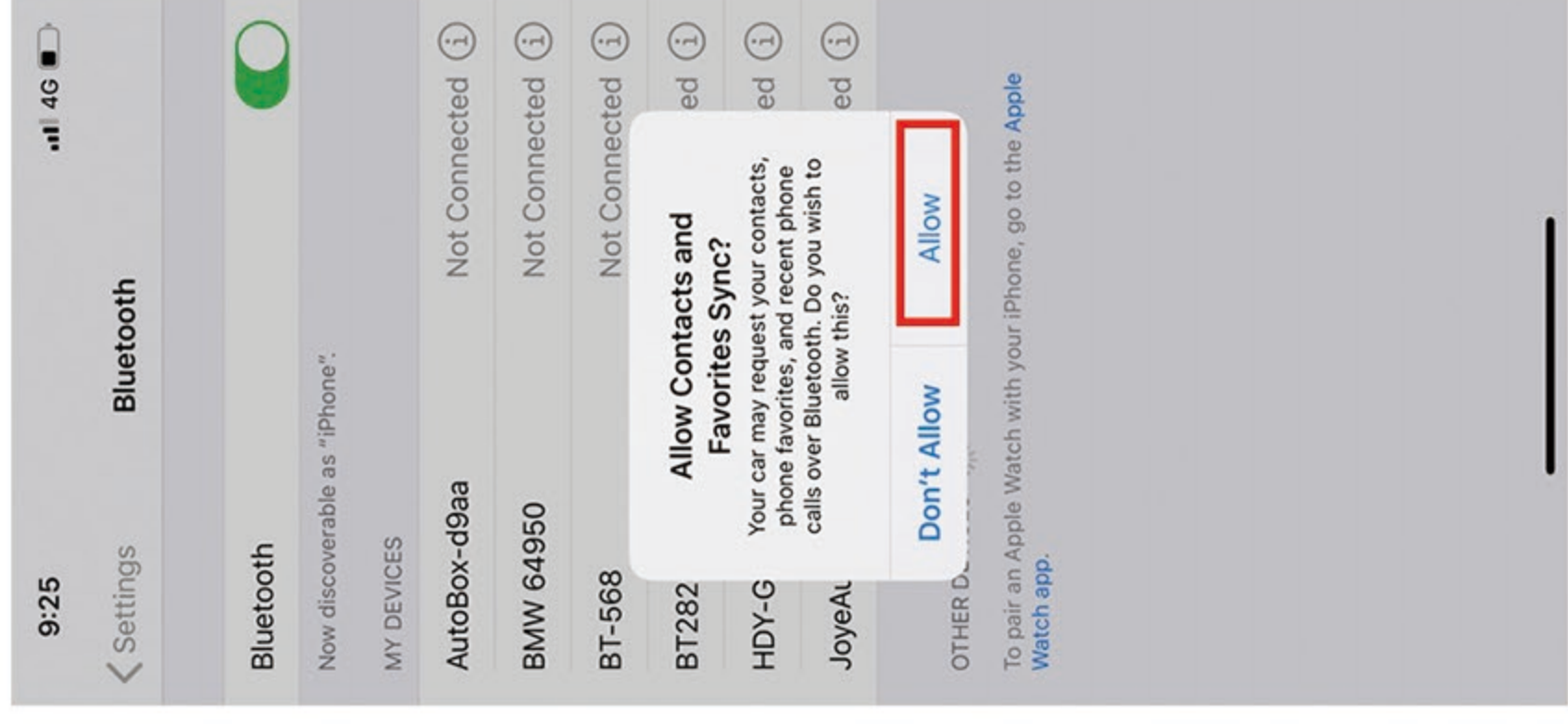
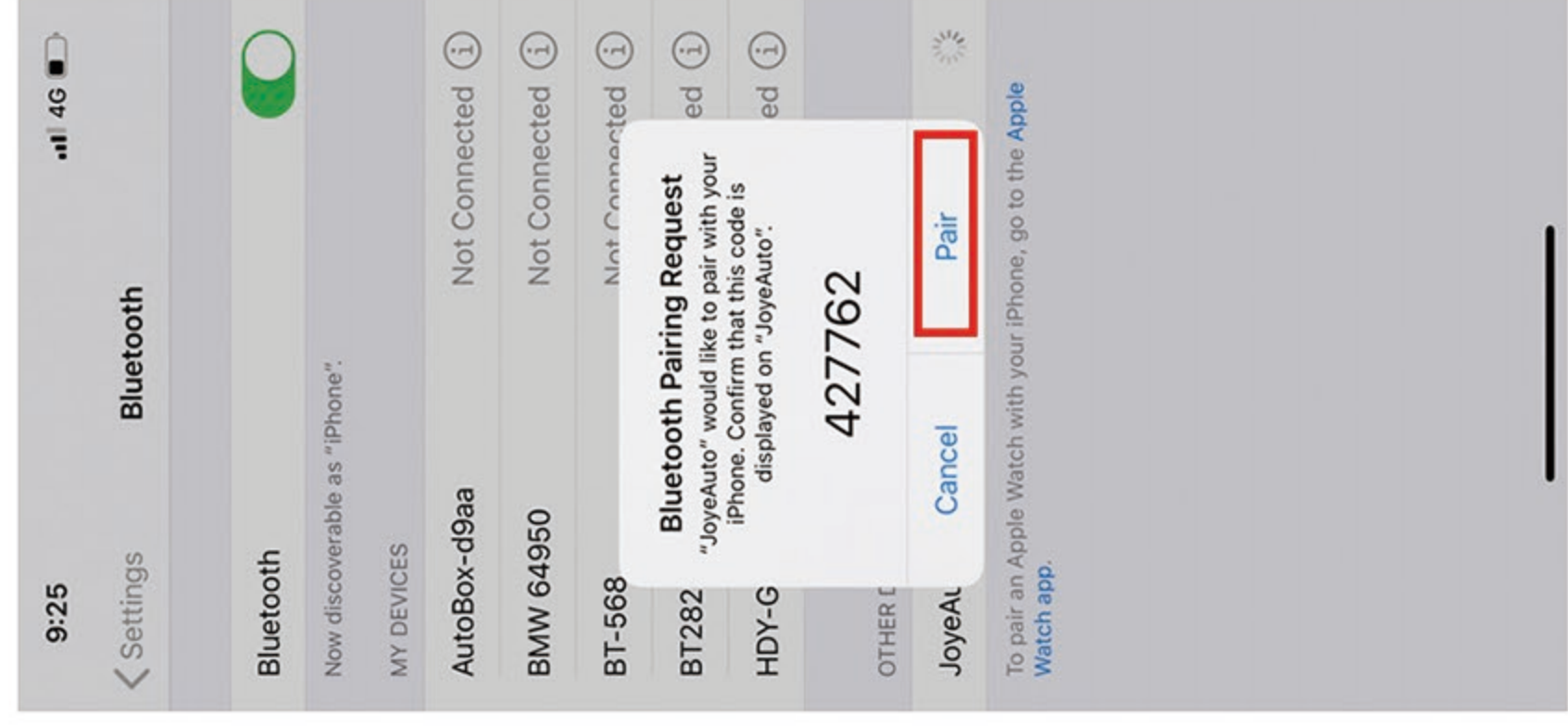
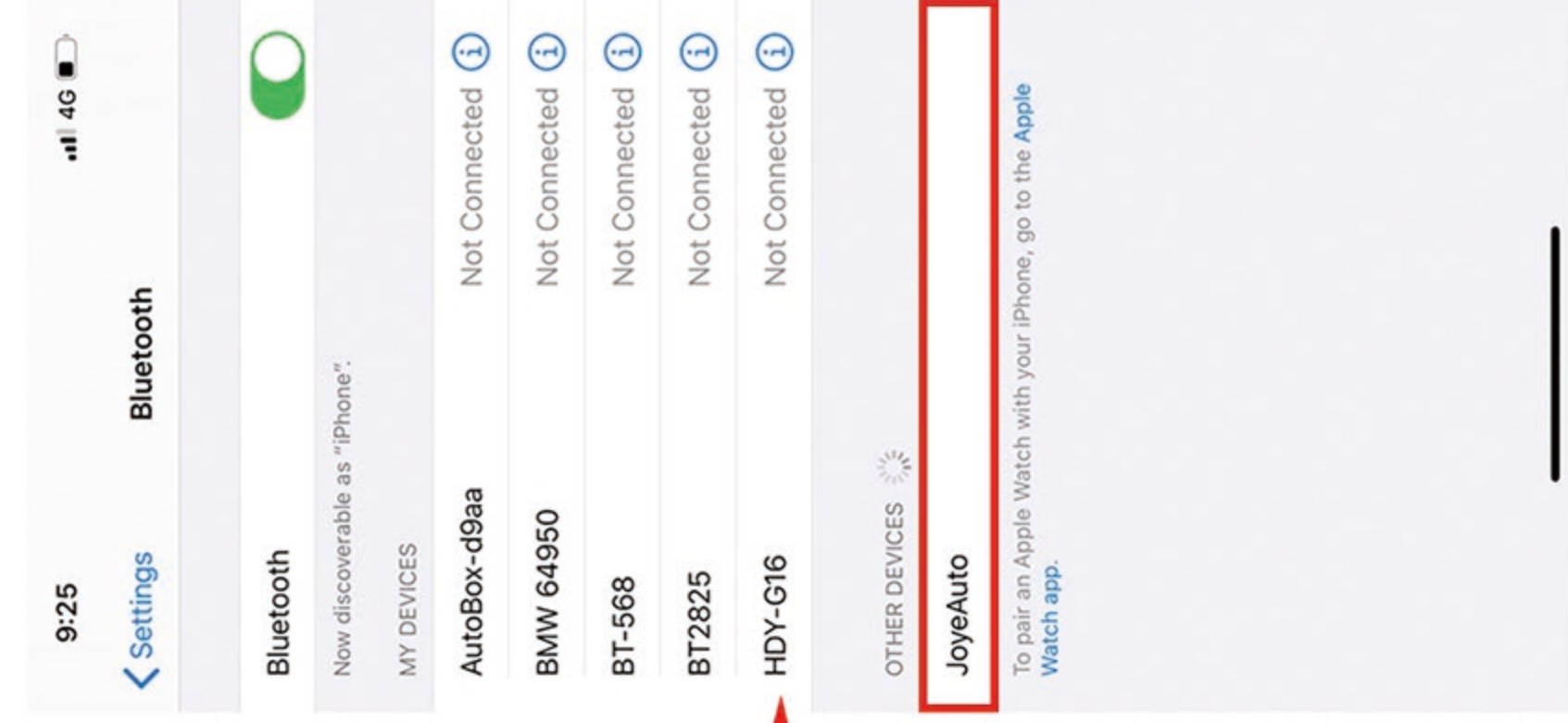
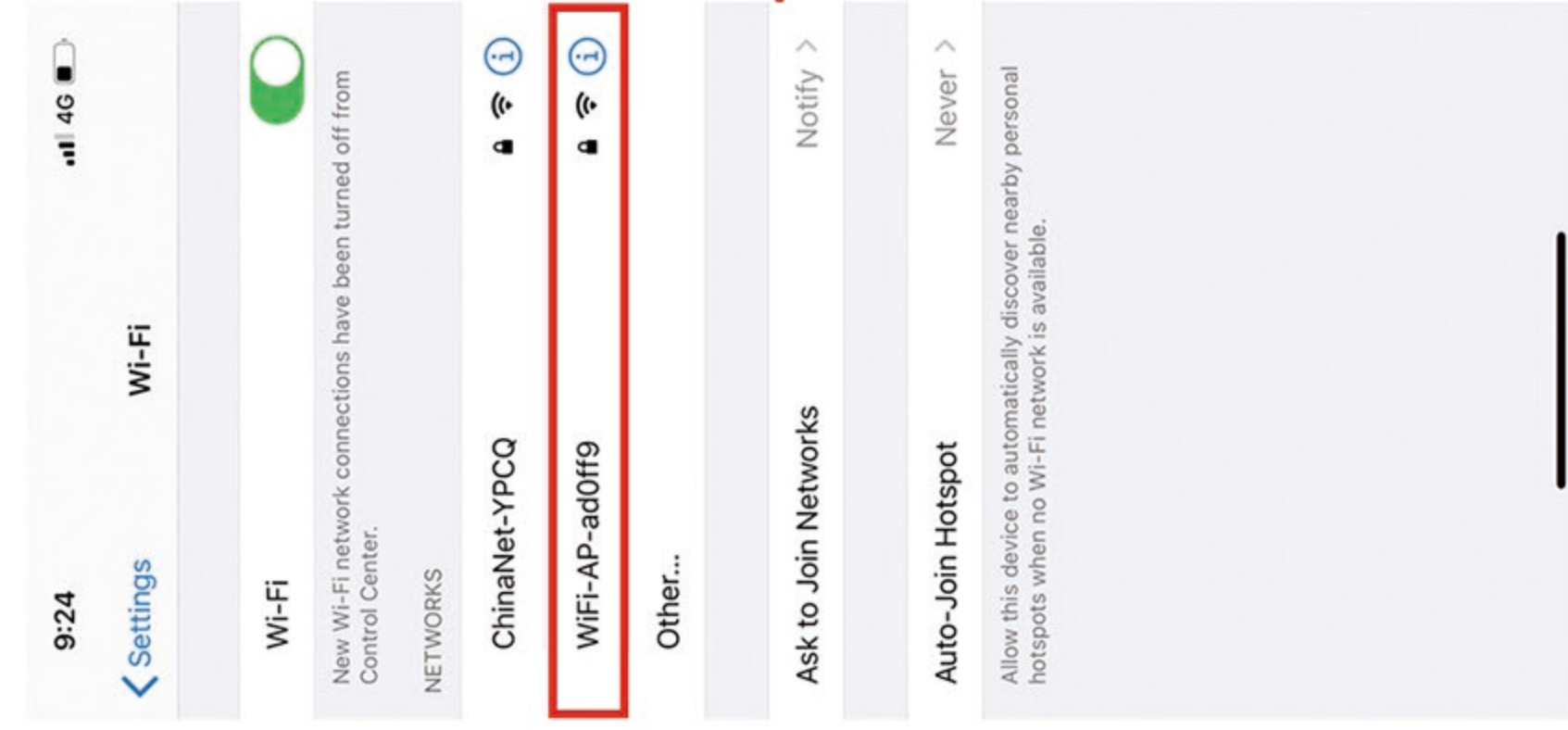
1, Long press switch button(different car with different switch button,check from installation diagram) to enter JoyeAuto system main menu as below(BMW for example):



2, Then turn ON Wi-Fi from iPhone's settings,you will find option of “ WiFi-AP-\*\*\*\* ”,but DO NO need connect it, and DON'T connect any other network.

Turn ON Bluetooth, find and click “JoyeAuto”, then according below steps get wireless connection

(Note: If “JoyeAuto” shows connected,but didn't go to carplay,then click Setup ->Bluetooth -> Paired device -> WiFi CarPlay then iPhone will show Use CarPlay request)



3, After 5 sec, it will enter CarPlay screen automatically, then enjoying...

